

STOCKTON-ON-TEES
BOROUGH COUNCIL
**APPROVED
PLAN**
HEAD OF PLANNING
& ENVIRONMENT

06/2489/ --
STOCKTON BOROUGH COUNCIL
PLANNING
04 JUN 2009
DATE RECEIVED



SBC 0001

09/1343/ -

STOCKTON BOROUGH COUNCIL
PLANNING
- 4 AUG 2006
DATE RECEIVED

DRAWING TITLE
Close Paddock, Ingleby Barwick
DATE
July 2006
SCALE
1:1250

■ STEPHENSON JOHNSON RILEY ■
■ ARCHITECTS ■
■ Planning Supervisors • Interior Design • Project Management ■
No. 1 Enterprise House • Thorntham Road • Harrogate • TS25 1NS • Tel: 01429 265451 • 86008 • 268718 • Fax 01429 862036
e-mail: office@sjrarchitects.co.uk





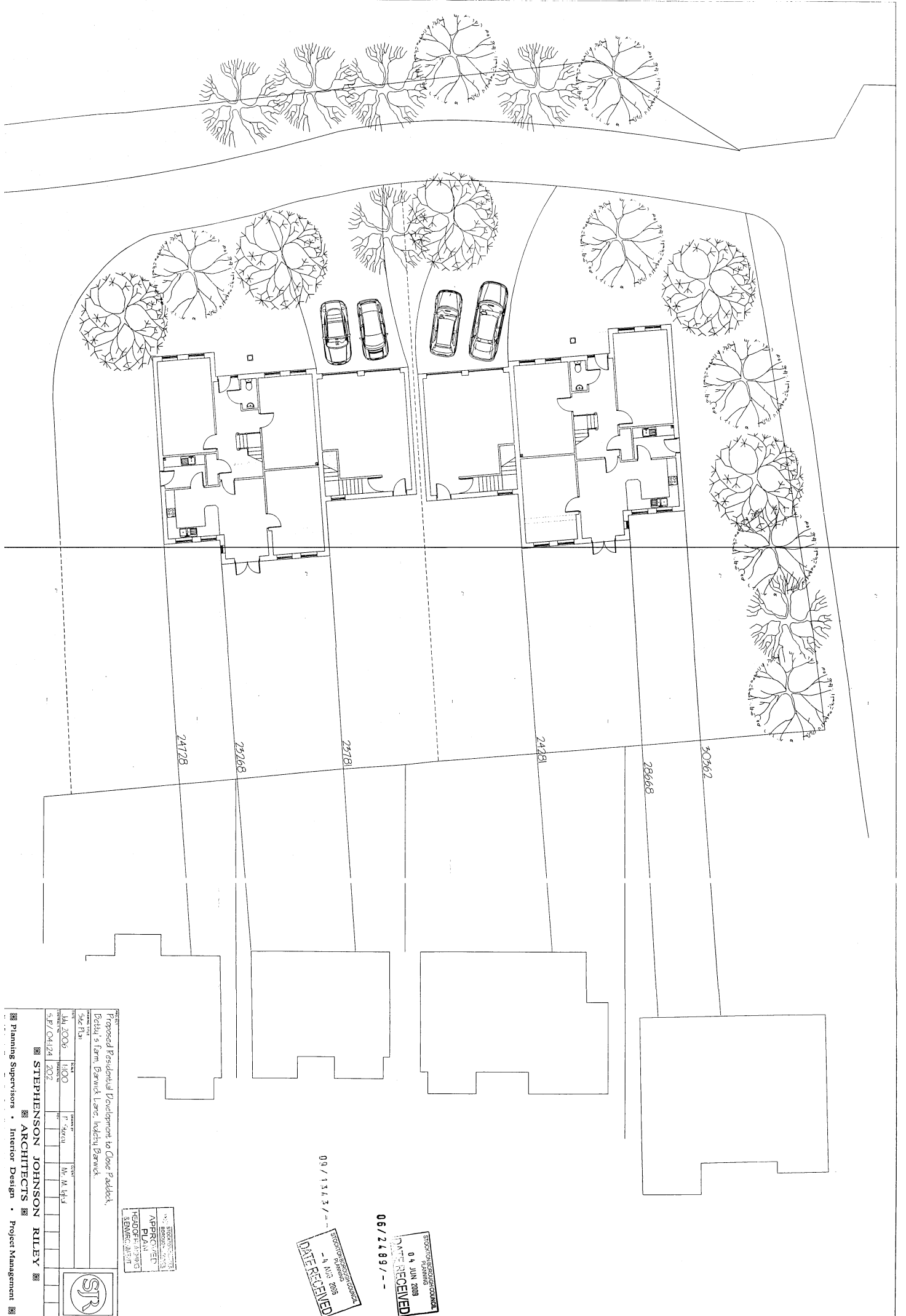
06/2499/-

RECEIVED
04 JUN 2008
DATE RECEIVED

APPROVED
HEAD OF PLANNING
DEPARTMENT

| NO. | DATE | DESCRIPTION | BY | FOR |
|-----|----------|-------------|------------|--------------------------|
| 1 | 15/06/08 | RECEIVED | M. JOHNSON | STEPHENSON JOHNSON RILEY |
| 2 | 15/06/08 | RECEIVED | M. JOHNSON | ARCHITECTS |
| 3 | 15/06/08 | RECEIVED | M. JOHNSON | PLANNING SUPERVISORS |
| 4 | 15/06/08 | RECEIVED | M. JOHNSON | INTERIOR DESIGN |
| 5 | 15/06/08 | RECEIVED | M. JOHNSON | PROJECT MANAGEMENT |





PROPOSED RESIDENTIAL DEVELOPMENT TO CLOSE 2nd ADD'N,
 DEDDY'S FARM, BARWICK LANE, HADLEY BARWICK.

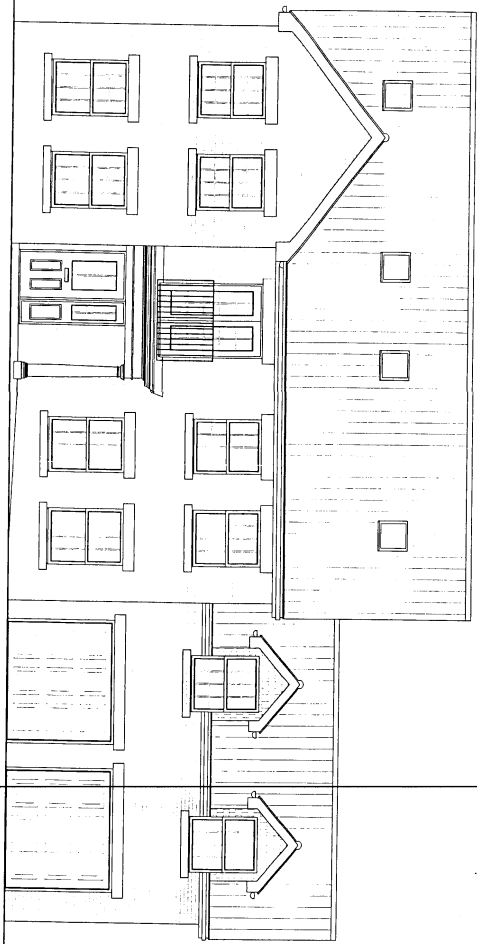
| | | | |
|---------------|----------|-------------|-----------------|
| DATE | APPROVED | BY | FOR |
| JUN 2006 | 1100 | F. J. JONES | Mr. M. J. JONES |
| 5/8/04/24/202 | | | |

STEPHENSON JOHNSON RILEY ARCHITECTS
 Planning Supervisors • Interior Design • Project Management

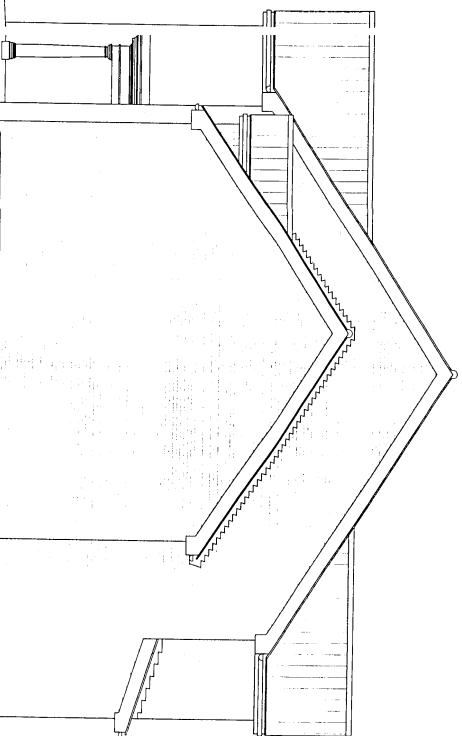
STEPHENSON JOHNSON RILEY ARCHITECTS
 HEAD OFFICE: 5 SPAIN GARDENS
 BARNWICK, LEAFSDALE, LEICESTERSHIRE LE19 4RQ

09/13/03
 DATE RECEIVED
 06/24/09

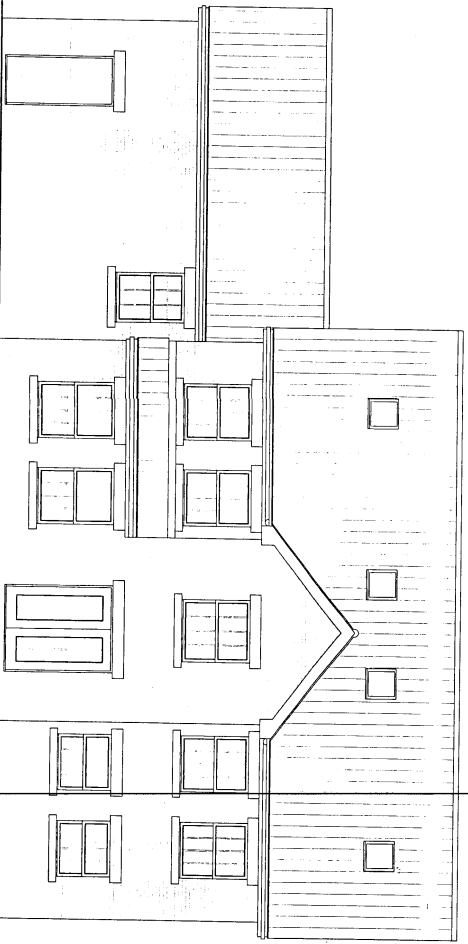
04 JUN 2009
 DATE RECEIVED



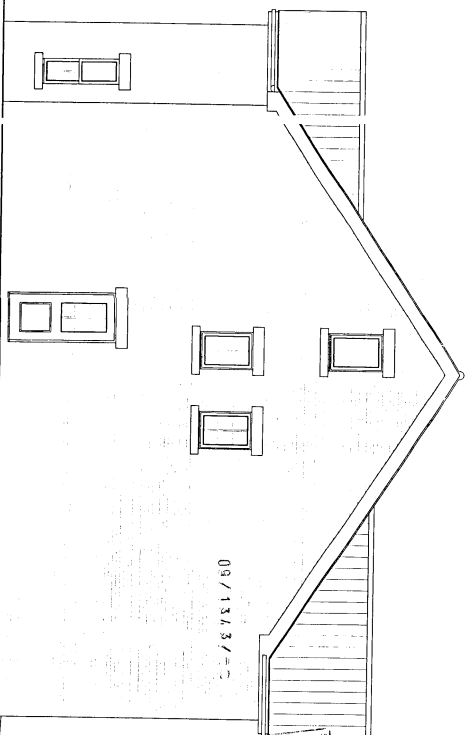
Front Elevation



Side Elevation



Rear Elevation



Side Elevation

RECEIVED
04 JUN 2009

06/2489/-

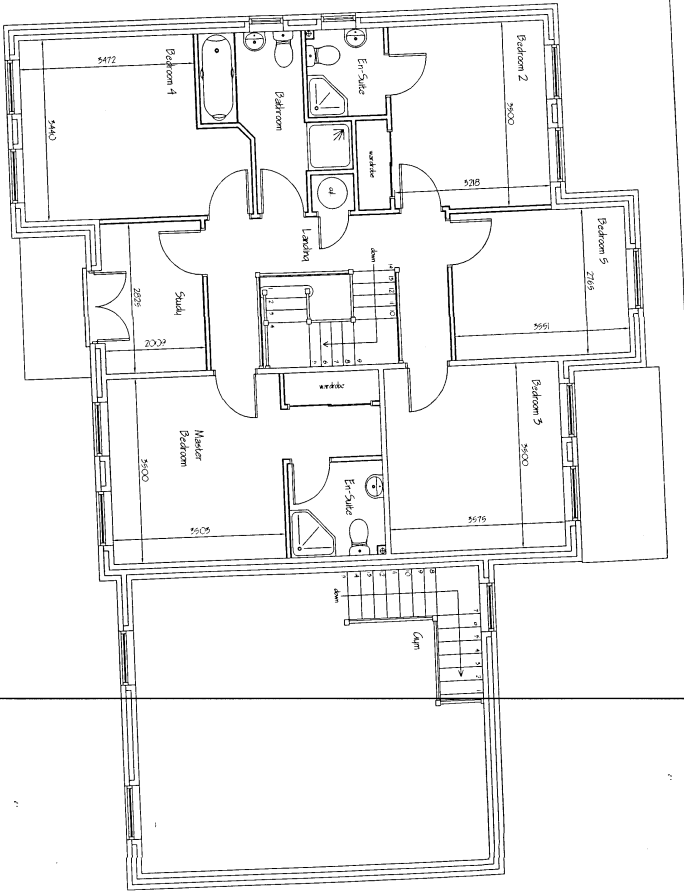
APPROVED
HEAD OF SERVICE
PLANNING
DEPARTMENT



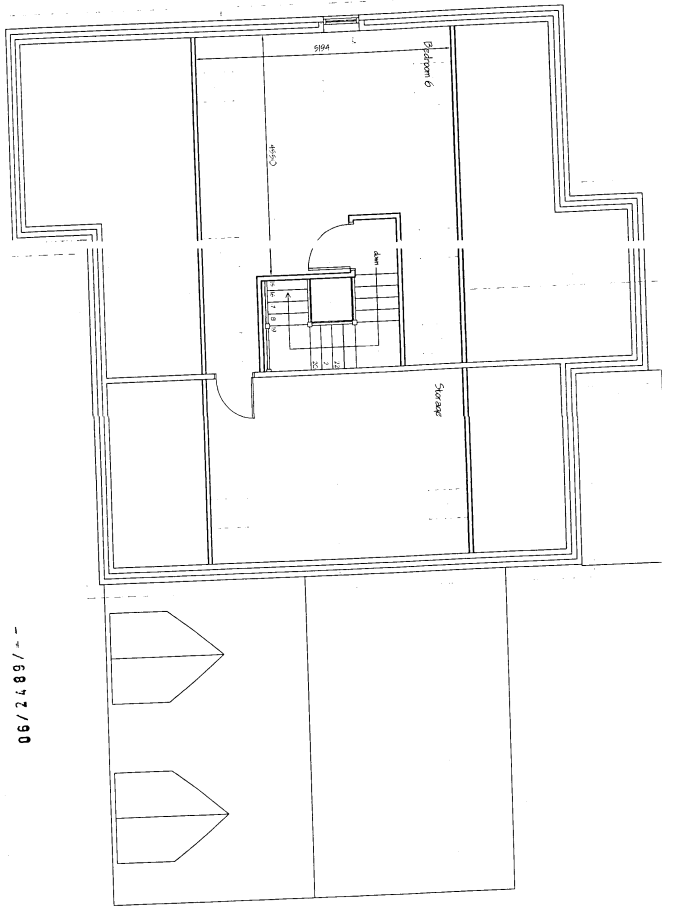
Proposed Residential Development to Close Raddeck,
Bethel's Farm, Darwick Lane, Iceland, Barwick.

| | | | |
|--------------|------------------------------------------------------------------------------------------------------|-------------|------|
| PROJECT NAME | Proposed Residential Development to Close Raddeck, Bethel's Farm, Darwick Lane, Iceland, Barwick. | | |
| DATE | 06/2006 | SCALE | 1:50 |
| DRAWN BY | 5/R/OH/24 | CHECKED BY | ZOI |
| DATE | 04/24 | DATE | 201 |
| PROJECT NO. | A | PROJECT NO. | A |

STEPHENSON JOHNSON RILEY ARCHITECTS
 Planning Supervisors • Interior Design • Project Management

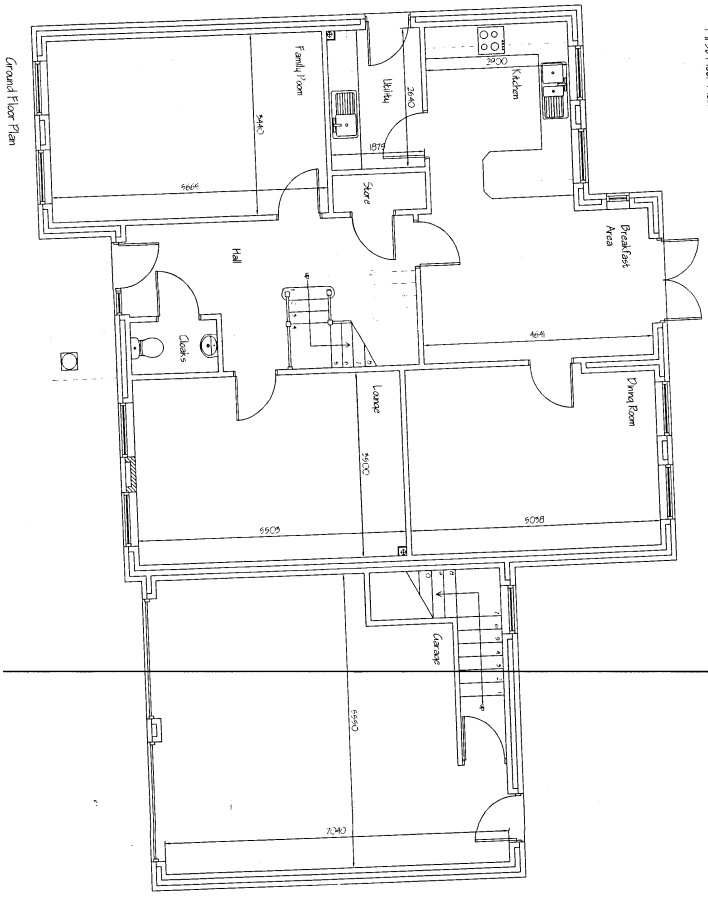


First Floor Plan



Second Floor Plan OPTIONAL

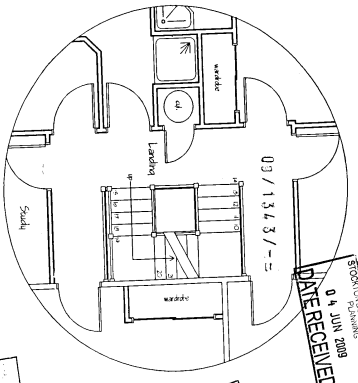
-- / 687 / 90



Ground Floor Plan

FLOOR AREAS

- Ground Floor - 146.9 Sq / m
inc. garage
- First Floor - 141.7 Sq / m
inc. qpm
- Second Floor - 51.7 Sq / m
inc. storage
- TOTAL AREA - 288.6 sq / m (without second floor)
- TOTAL AREA - 340.3 sq / m (with second floor)



Optional Staircase Arrangement to Second Floor

DATE RECEIVED 06 / 24 / 90

STEPHENSON JOHNSTON RILEY ARCHITECTS

For A - Plan Amended at Request of Client - August 2006

PROJECT: Proposed Residential Development to Close Paddock.
 1000: 2006
 5-B / 04124 2000
 ARCHITECTS: STEPHENSON JOHNSTON RILEY ARCHITECTS
 PROJECT MANAGER: [Name]

